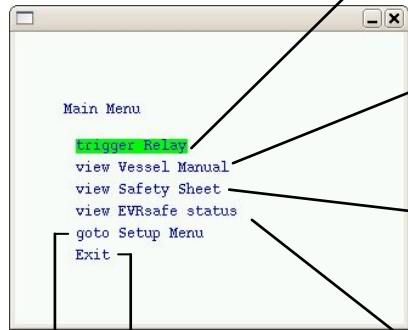


EVRsafe ISS 1040 Quick Guide

ISS 1040 splash screen



Main Menu

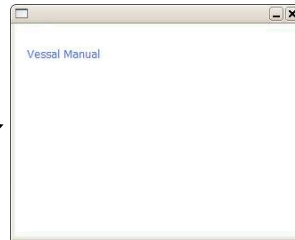


Exits to the main Monitor screen

Opens the Setup Menu.



From the Trigger relay screen you can??



Displays the Vessels Manual

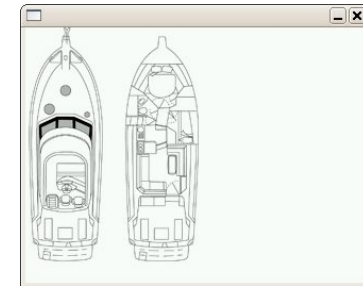


Displays the Safety sheet information.



Displays the ISS 1040 unit's status

Main Monitor Screen



From the Main Monitor screen all active sensors can be monitored.

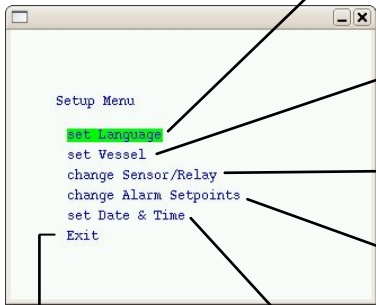
— Shows a negative reading

The green down arrow shows the gas is decreasing.

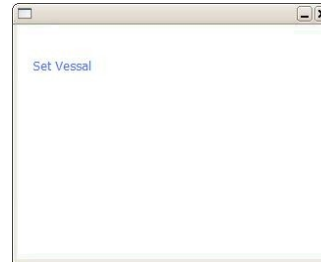
The red up arrow shows the gas is increasing.

EVRsafe ISS 1040 Quick Guide

Setup Menu



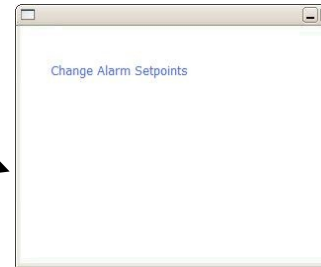
Select the preferred language.



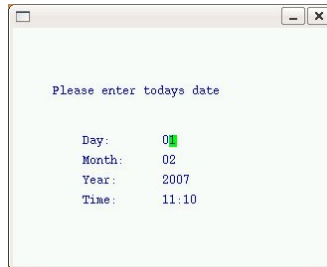
Selects the Vessel and correct layout.



Change, add or delete a sensor or relay.



Set the Alarm levels for each type of gas.



Set the time and date.

Exits to the Main menu