

## Self Installation Guide

# SENSORS



Tools required for installation of sensor housing's and central processor.



Mark out position of sensor and drill with 5mm holesaw.



Ensure sensors are installed in a suitable location.

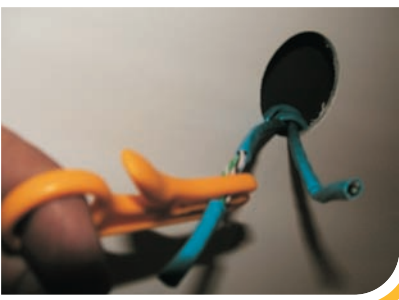


Fit sensor housing.

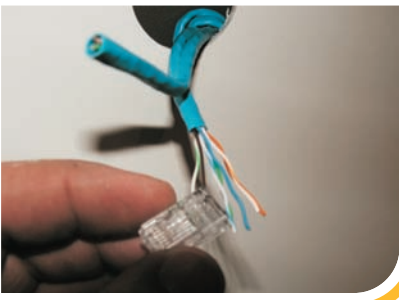




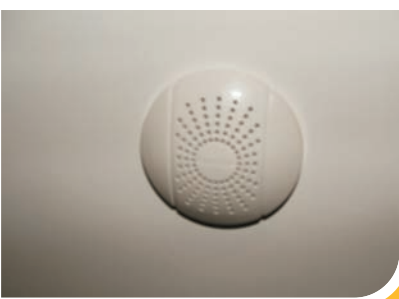
The toggles are fitted flush with housing and when stainless steel bolt begins to tighten it will turn toggle to right or left then tension up against fibreglass.



Install cat 5 stranded cable and strip outer sheath.

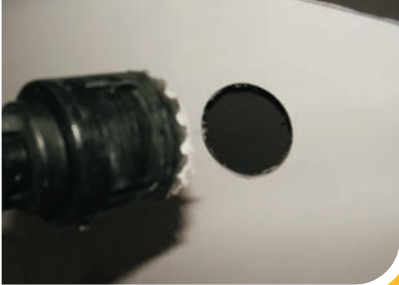


Install male RJ45 with crimping tool and refer to colour coding.



Once sensor housing installed the front cover is able to be clipped on.

## Self Installation Guide **CENTRAL PROCESSOR**



Drill 51mm hole in the same manner as the sensor housing,



Fit housing through the 51mm hole and place rubber O-ring before tensioning nut.



Cable segregation is very important . This is to minimise EMI (electromagnetic interference) cable ties and other cable fastenings must be used to minimise vibration and assures mechanical protection for durability. Please see Australian standard on running of communication cable.



Completed unit.